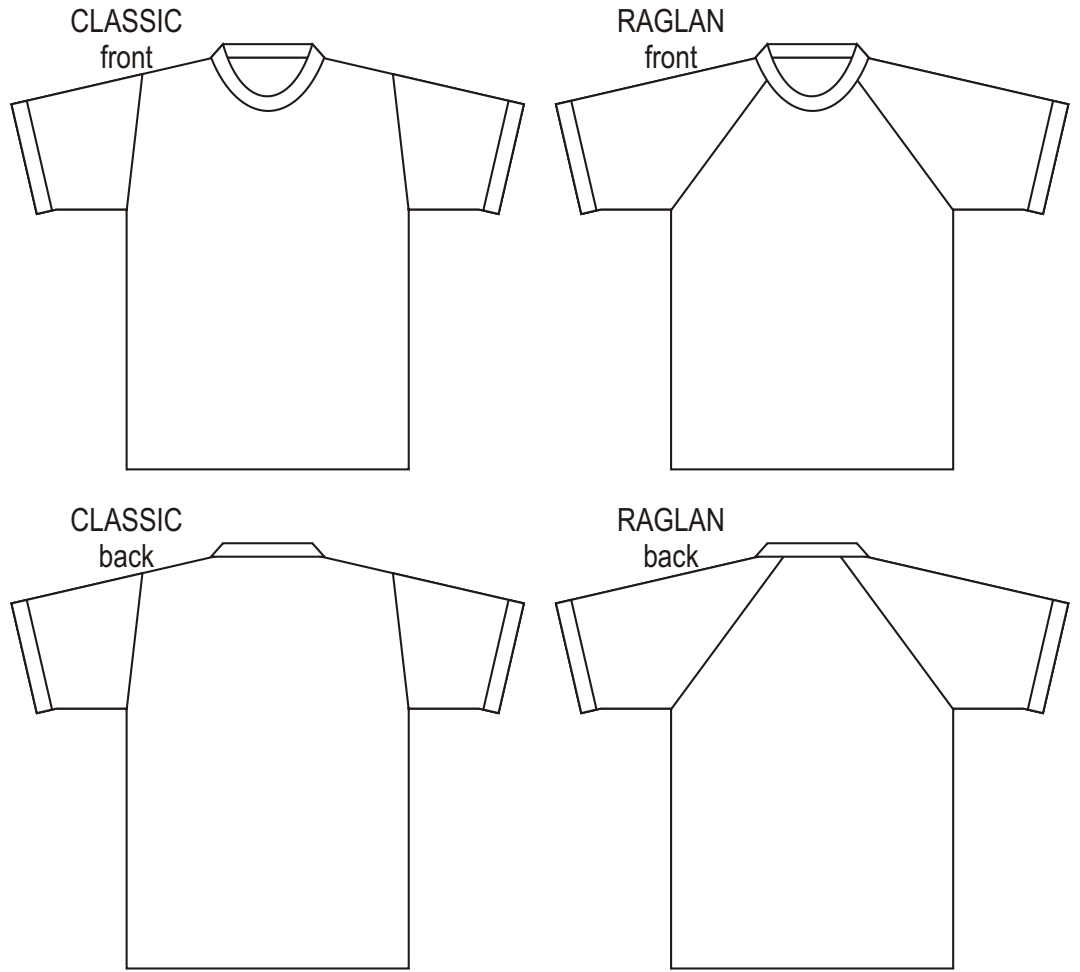




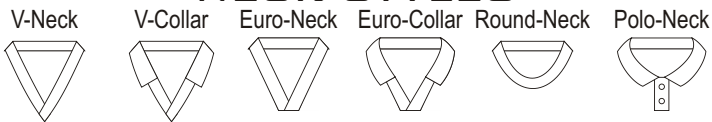
CUSTOMER: _____
 CONTACT: _____ Ph: _____
 ORDER No: _____ Fax: _____

Sublimation Design Sheet.

When designing a garment, it is important to consider the pattern of the garment and its effects over your size range. To the right you will see our two basic shirt styles. Try to design your shirt to fit one of these styles. Matching a print across a seam is not always 100% accurate so it is best to avoid this where possible. Once you have your design complete, you can then choose a neck style, whether you want cuffs or the sleeve to be hemmed and finally the fabric (airweave, Jacquard or other).



NECK STYLES



SHIRTS

| | | | | | | | | | | | |
|----------|--|----|----|----|----|-----|-----|-----|-----|--|-------|
| Size | | 70 | 80 | 85 | 90 | 100 | 110 | 120 | 130 | | Total |
| Quantity | | | | | | | | | | | |

The same design principles apply to shorts. You may wish to subliminate the whole short or just a section or a panel of the short, eg: Left front or Lanta panels.

SHORTS (S) Short, (L) Long, (W) Womens

| | | | | | | | | | | | |
|----------|--|----|----|----|----|----|-----|-----|-----|--|-------|
| Size | | 70 | 80 | 85 | 90 | 95 | 100 | 110 | 120 | | Total |
| Quantity | | | | | | | | | | | |

